

A Year in Örebro.

The Municipality's Quality at a glance, 2016





Photography: Susanne Flink and The Municipality of Örebro.

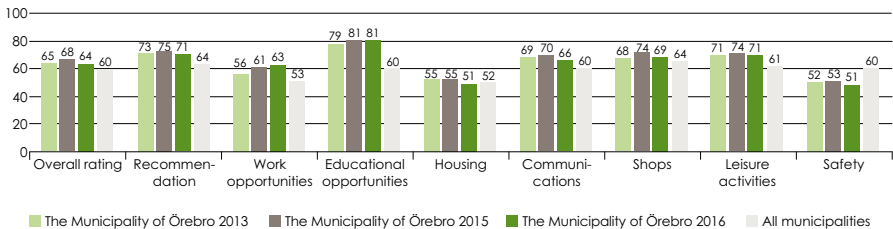
A Year in Örebro

Örebro is a green and environmentally friendly municipality and every year we grow in numbers. At the turn of the year 2015/2016 we had 146,631 inhabitants, making us the seventh largest municipality in Sweden in terms of population. The economy of the municipality remains strong and stable, which creates sustainable conditions for the welfare that we are responsible for. To maintain our welfare system it requires a functioning labour market and thriving business sector. More and

more companies are starting up, growing and developing, which means lower unemployment.

Örebro Municipality put the citizens first and we are making efforts to become more accessible, especially via our website and our service centre at the heart of the city. In various ways, we are making it easier for the citizens to utilise the municipal services and make their own choices.

The citizens' attitudes towards Örebro as a place to live and work (NRI)*



* Statistics Sweden: Citizen survey



Photography: Andreas Lundgren.

Important events 2016

The municipality launches a new website, providing better information and service.

Great interest on Facebook regarding the activities of the municipality, better than in any other municipality.

Örebro Race Day brings thousands of motor enthusiasts together.

Musikhjälpen 2016 (with the goal to create awareness about and raise money for a humanitarian catastrophe) breaks a new record, raising over SEK 49 million.

Many citizen dialogues are held about e.g. the city parks and the green areas in Örebro.

Idrottshuset (The Sports Hall for sports like basketball, gymnastics, volley-ball and handball) celebrates its 70th anniversary.

The Örebro Region climbs to second place in the national logistics ranking.

Higher level of satisfaction among local companies regarding the service and work of the municipality as an authority.

Örebro receives the Security Award for best municipal security work of the year.

The quality award Nya steg (New Steps) goes to the nursing and care home Skebäcksgården and Stolta promenerare (Proud Walkers). Their collaboration has contributed to a better quality of life for the residents.

The municipal building award goes to the neighbourhood Kumminen 2 in Sörbyängen and their solar-powered terraced houses.

Water scarcity and the citizens are asked to use their water carefully.

Important events within Childcare and Education

- The students' results in year 9 improve compared to 2015.
- The annual child, student and parent survey in preschool, compulsory school and upper secondary school shows that the level of satisfaction remains high.
- The teaching awards goes to Annelie Andersson, Björkhaga Preschool, Anders Österberg, Gumaeliuskolan and Isabella Kronvall, Rudbecksgymnasiet.
- The school development project 'top 25 by 2025' is initiated.
- It is decided that grades 7–9 at Vivallaskolan will close as of the autumn term 2018.
- Risbergska stops operating as an upper secondary school as of the autumn term 2016.



Important events within Community Planning

- Västra Grönpepparparken opens, the biggest park to be constructed in Örebro for many years.
- A consultation document for the land-use planning is drawn up. Public consultation will be held during the spring 2017.
- Architects Sweden vote Örebro Municipality 'the enabler of the year'.
- 'The Örebro model' for the planning and land allocation process puts Örebro Municipality on the map.
- The architectural competition 'The heir of Svampen – new water tower in Örebro' is completed and the winning proposal is 'Lyra'. Construction will begin in 2017.
- Skebäcks wastewater treatment plant, the water and sewage unit, receives the quality award Nya steg for their 'upstream work' 2015. They are also nominated for GötaPriset, which is awarded the best development project in the public sector in Sweden.
- In collaboration with Childcare and Education, pupils from Perrongen and Language Introduction, together with other children who have recently arrived in Sweden, are introduced to activities at Kulturskolan (School of the Arts).
- A development programme for Wadköping is drawn up and will be implemented.
- The popular crayfish fishing takes place in Svartån with a total of 105 fishing spots.

Important events within Social Welfare

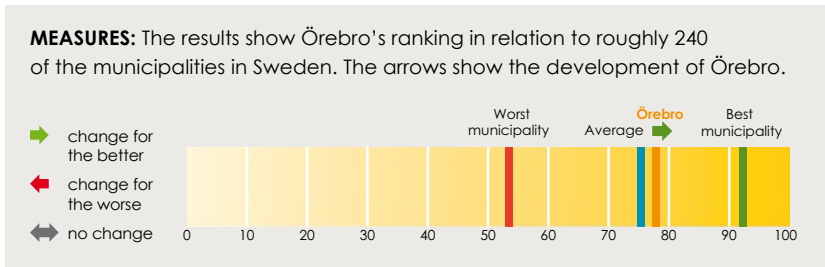
- The nursing and care home Trädgårdarna opens in 2016 with room for 56 residents. Four new group homes open.
- The Senior Festival is a success, partly thanks to excellent cooperation with civil society.
- The project Skolfam takes off in terms of a social investment. The aim is to create better conditions for children who grow up in foster care to perform well in school.
- A social welfare office opens in Vivalla to increase accessibility for the children, adolescents and families who are registered with the Social Welfare Administration, as well as better accessibility for the local partners that play a key role in the local society of Vivalla.
- To improve services, the Chief Guardians Committee launch a new website for guardians and a number of e-services.



Priority areas for development

The Municipal Council has identified four prioritised strategic areas for development and within each area there are a number of target areas which apply throughout the term of office. Here we

will present the results within the strategic areas. In the municipal annual report available at orebro.se you can find more information about our work.



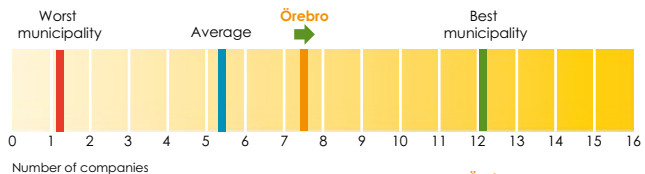
Sustainable growth

Örebro Municipality will promote growth as well as reduced climate impact. Sustainable growth is key in order to manage the challenges faced by the municipality today and in the future.

Örebro will be a municipality that supports new companies and encourages them to grow and develop within the municipality. Good communications are necessary for a functioning everyday life.

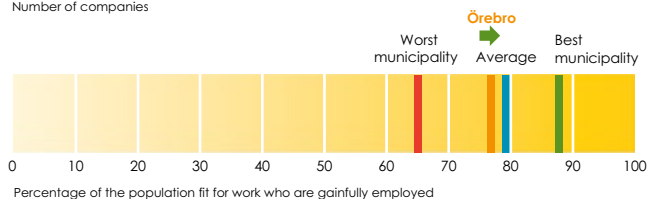
MEASURE 33

How many new companies have started up per 1,000 inhabitants in the municipality?



MEASURE 31

Number of people in gainful employment in the municipality

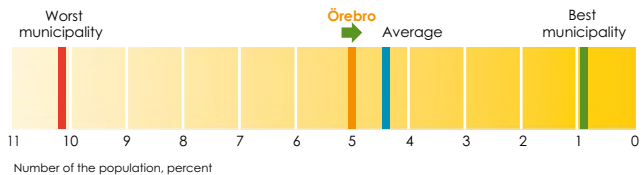


Result per strategy area – Sustainable growth

- The unemployment rate has dropped in Örebro and is now below the national average.
 - The number of households dependent on long-term economic assistance has reduced, as has the number of households with short-term assistance.
 - Companies are increasingly satisfied with the service and work of the municipality.
 - Environmental efforts are increasing. There is less food waste, and the share of ecological produce is growing, as is self-produced electricity. In addition, there is also an increase in procurements with focus on environmental and social aspects.
 - The members of staff at Örebro Municipality reach the same sustainable employee engagement rating as members of staff in other municipalities in the country. The survey looks at management, leadership and motivation.
 - There are fewer people employed by the hour.
 - The number of care personnel being offered full-time employment has increased.
 - The number of split shifts for personnel within the home-help service has reduced, but is increasing for staff in nursing and care homes.
 - The amount of unused space in the municipal facilities remains low.
 - The municipal committees are overall able to perform within their allocated budget.
 - The amount of granted measures through social investments is growing – there are currently nine approved cooperation projects.
 - The number of municipal services that now run via intrapreneurship has increased.
-
- When the targets have been met and the development contributes towards the overall result of the municipality.
 - When development has taken place but the target has not been met.

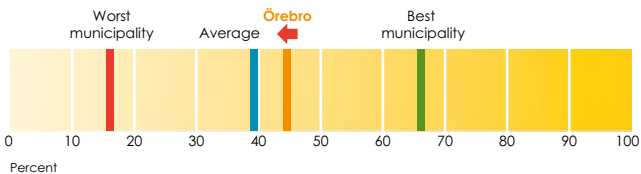
MEASURE 32

How many of the population are receiving economic aid?



MEASURE 36

How effective is the municipal handling and recycling of domestic waste?



People's empowerment

A person who is allowed to actively shape their own life is a happy person. A person who wants to develop on a personal level and have a positive impact on other people should be given the

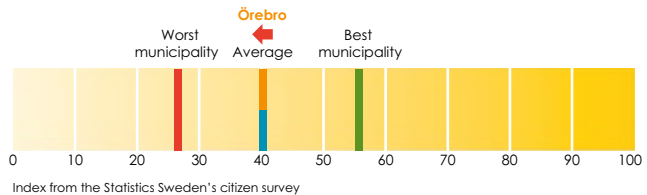
chance to do so. Örebro Municipality will become better at unleashing the inner power of citizens who are willing and able to make the municipality grow. Örebro offers opportunities to everyone.

Result per strategy area – People's empowerment

- The housing segregation in the municipality remains at the same level as in 2015.
 - The municipality needs to do more to enable the inhabitants to participate in the municipal development and to feel that they are informed and possess influence.
 - Efforts are being made to improve gender equality. Eleven gender budget analyses were carried out within the organisation during 2016.
-
- When the targets have been met and the development contributes towards the overall result of the municipality.
 - When development has taken place but the target has not been met.
 - When more needs to be done to move in the right direction.

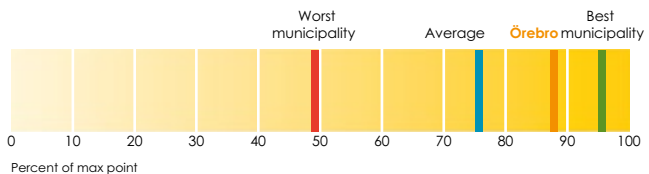
MEASURE 15

How well do the citizens feel that they are informed about and are able to influence the municipal organisation



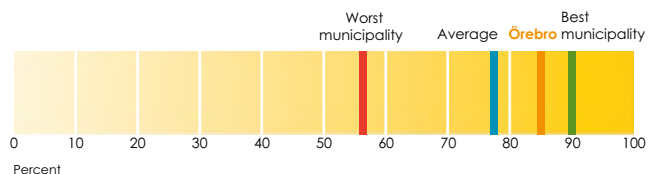
MEASURE 13

How sufficient is the municipality's online information to the citizens



MEASURE 3

The amount of people who feel that they received good service over the phone





The needs of children and young people

Every child deserves a happy childhood and an education where they feel safe and has the chance to develop. Through early efforts and initiatives to prevent physical as well as social and mental ill health, more children and young people will have a nice childhood and

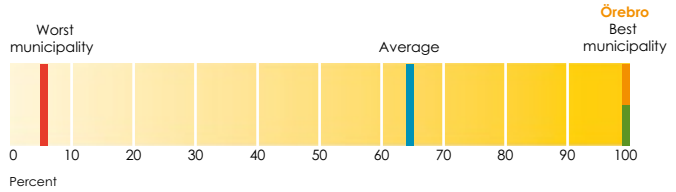
a healthier life. One factor which has a big negative impact on a person's childhood and adolescence is child poverty. Through coordinated efforts between different actors in society we will strengthen every child's chance to have a happy and safe childhood.

Result per strategy area – The needs of children and young people

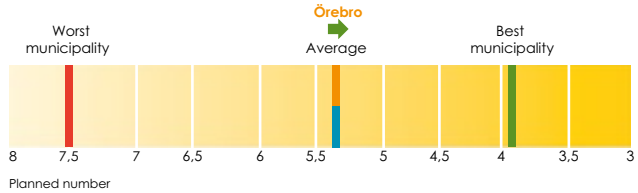
- The number of pupils who finish their studies in year 9 with the lowest grade E in all subjects is lower in Örebro than the average in other larger cities. The number of students who finish upper secondary school with a vocational or theoretical degree is, conversely, greater than the average in other larger cities.
 - The number of pupils who have reached the objectives in all subjects with knowledge requirements in year 3 has dropped.
 - Parents are happy with the preschools and the after-school clubs.
 - The size of preschool classes continues to decrease.
 - Everyone who applies for childcare in Örebro will receive a placement by the date they have asked for.
 - Child poverty continues to decrease.
-
- When the targets have been met and the development contributes towards the overall result of the municipality.
 - When development has taken place but the target has not been met.
 - When more needs to be done to move in the right direction.

MEASURE 5

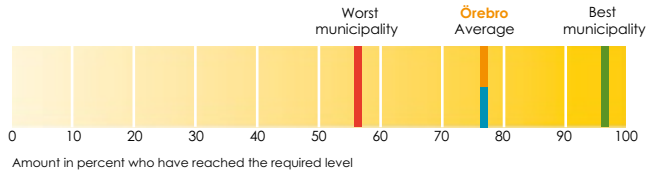
The amount of children who have been offered a place in preschool on the desired start date

**MEASURE 11**

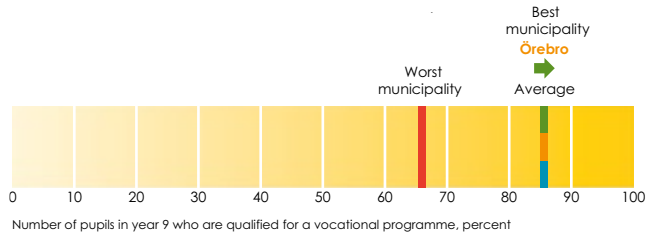
Number of children per member of staff in the municipal pre-schools, planned

**MEASURE 17a**

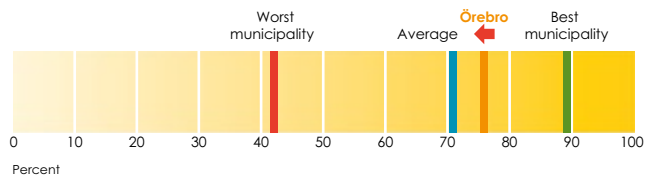
What result do pupils in year 6 reach?

**MEASURE 18**

Amount of pupils qualified for a national programme at upper secondary level

**MEASURE 21**

Number of students who complete their upper secondary education in the municipality



Secure welfare

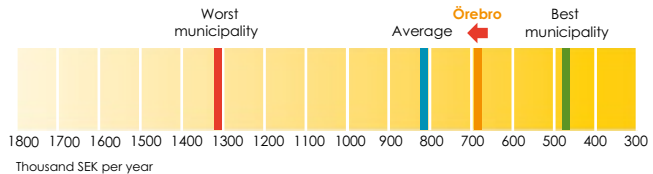
The municipal welfare services create quality for individual people. They also create quality for society as a whole, thus strengthening all of Örebro. Örebro

Municipality will be a place where people want to grow up, work and grow old. This requires a secure welfare programme so that people's sense of safety increases.

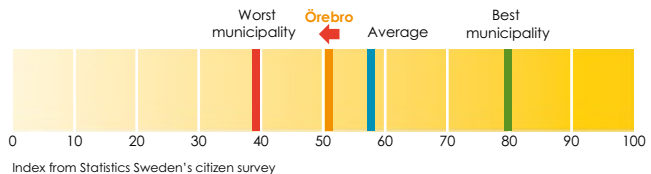
Result per strategy area – Secure welfare

- Residents in nursing and care homes are less satisfied than before with the care they receive, while people receiving home-help and disability support remain happy with the services.
 - The amount of service recipients who have been able to choose a home-help provider continues to grow.
 - The occupancy rate in nursing and care homes has decreased somewhat during the year.
 - Örebro Municipality does not fully live up to the service guarantees. Sometimes there is also a discrepancy between what the municipality has delivered and how the citizens perceive the service.
 - A lot of new housing is being built in Örebro. During 2016, 2,071 homes were completed, out of which 20 were apartments in group homes.
-
- When the targets have been met and the development contributes towards the overall result of the municipality.
 - When development has taken place but the target has not been met.

MEASURE 24
 What is the cost of accommodation at the one of the municipal nursing and care homes?

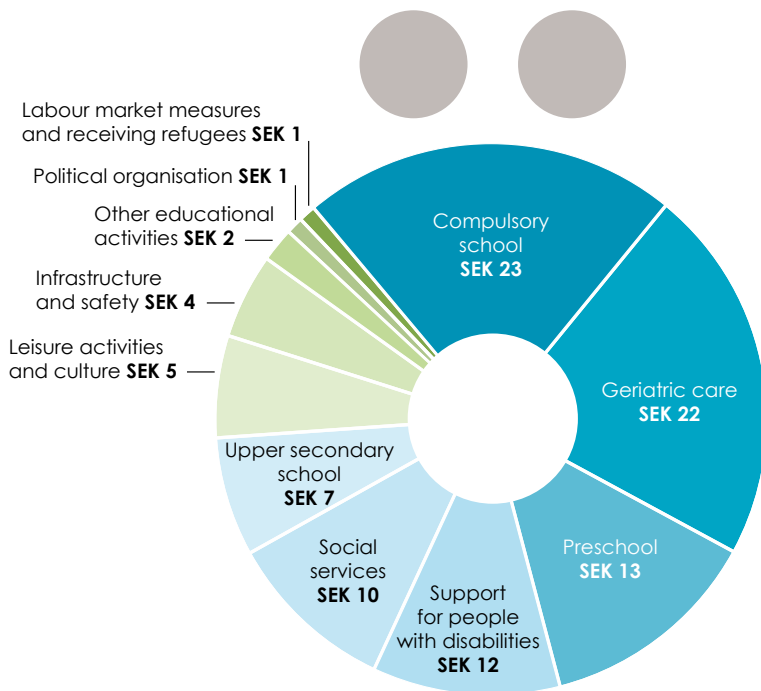


MEASURE 9
 How safe do the citizens feel in the municipality





How SEK 100 is distributed within the municipality



The municipal organisation

Örebro Municipality is organised in three programme areas. Each programme area is managed by a programme committee. A number of operational committees are responsible for their different areas.

The municipal executive board

The municipal executive board manage and coordinate the planning and follow-up of the municipal economy and activities, with the support of programme committees.

Childcare and education

The Childcare and Education Programme Committee are responsible for the care and education of the children and young people in Örebro Municipality, for the exercise of authority and for the quality development within childcare and education. The Preschool Committee are responsible for the municipal pre-schools and open pre-schools as well as childcare when pre-schools cannot be offered. The Compulsory School Committee are responsible for the municipal compulsory schools, the special school for the intellectually disabled and after school centres. The Upper Secondary School Committee are responsible for the municipal upper secondary schools, the upper secondary school for the intellectually disabled and the Swedish National Upper Secondary School for the Deaf and Hard of Hearing, the Swedish National Upper

Secondary School for the Intellectually Disabled, the municipal tech school Komtek and certain programmes for adults.

Community planning

The Community Planning Programme Committee are responsible for physical land-use planning and transport planning as well as preventative environmental measures. The Technical Services Committee are responsible for meeting the citizens' need of services in terms of water, wastewater, public cleaning, waste disposal, road maintenance and park maintenance. The Building Committee are responsible for planning and construction within the municipality. The Environment Committee are responsible for matters relating to e.g. the Swedish Environmental Code, the Swedish Food Law, the Swedish Tobacco Law, the Swedish Alcohol Law and the Swedish Law for Communicable Disease Control. The Leisure and Recreation Committee are responsible for the maintenance of sports and outdoor facilities, swimming pools and other bathing places, and for the funding of associations. The Culture Committee are responsible for Kulturskolan (School of the Arts), Örebro Art Gallery, libraries, youth recreation centres and activities for young people as well as supporting and coordinating city district development.

DISTRIBUTION OF SEATS IN THE MUNICIPAL COUNCIL 2015:

The Social Democratic Party	24
The Moderate Party.....	13
The Green Party	6
The Swedish Democrats.....	6
The Centre Party	4
The Christian Democrats.....	4
The Liberals	4
The Left Party	4
Total	65

Social welfare

The Social Welfare Programme Committee are responsible for the social services provided by the municipality as well as external providers. The committee draw up quality criteria for the services and are responsible for parts of the exercise of authority within social welfare. The two health and care committees are responsible for the municipal nursing and care homes, home-help services, day-care centres, support for relatives and rehabilitation. The Committee for People with Disabilities are responsible for providing support and service to people with disabilities. The two Social Welfare Committees are responsible for individual and family care within the social services. The Chief Guardians Committee are responsible for supervising the commission of custodians, trustees and legal guardians.

The Rural Affairs Committee

The committee answer directly to the municipal executive board and are responsible for promoting rural development and also act as reference in matters concerning the countryside in Örebro Municipality.

The Adult Education and Labour Market Committee

The committee answer directly to the municipal executive board and are responsible for adult education, adult education for people with disabilities, Swedish for immigrants (SFI) and contract education and other supplementary adult education. The committee are also responsible for measures within the municipal labour market programme and income support.

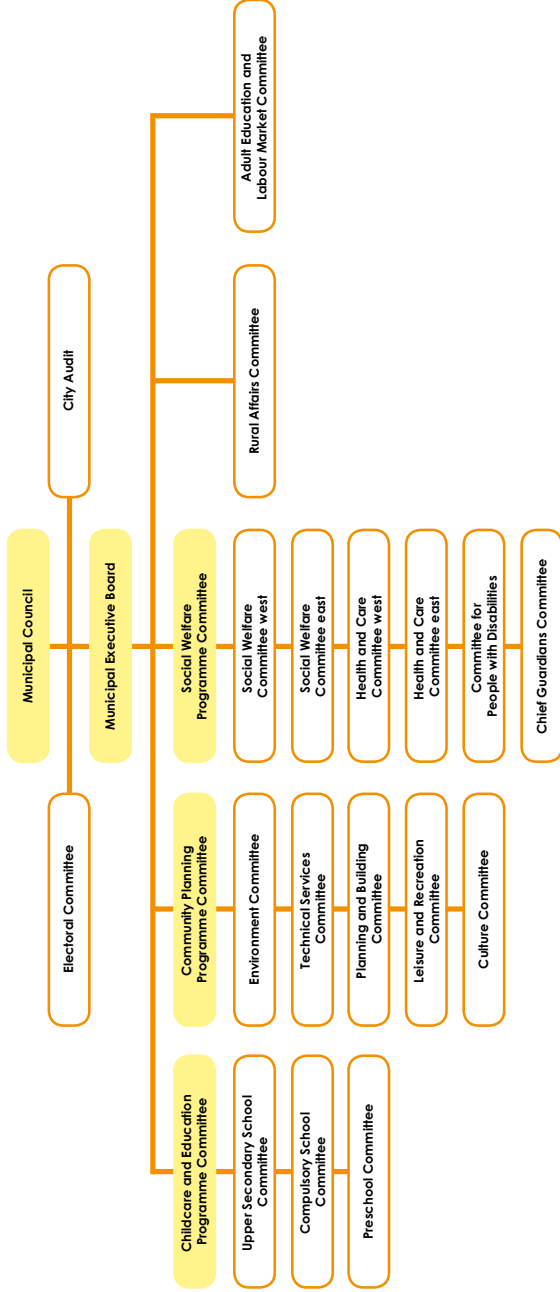
Political governance

Örebro Municipality is, during the period 2015–2018, jointly governed by the Social Democrats, the Christian Democrats and the Centre Party.

The municipal companies and foundations

Örebro Municipality has decided to conduct part of its organisation in corporate form and therefore has ownership interest in a number of different companies, economic associations and foundations. Örebro Municipality has a group of companies for the main part of the municipally owned companies with Örebro Rådhus AB as the parent company. The following ten companies are fully or partly directly owned by the parent company: Örebrobostäder AB, Örebroporten Fastigheter AB, Futurum Fastigheter i Örebro AB, Kumbro Utveckling AB, Länsmusiken i Örebro AB, Örebrokompaniet AB, Örebro Läns Flygplats AB, Alfred Nobel Science Park AB, Länsteatern i Örebro AB and Oslo–Stockholm 2.55 AB.

The municipal committees



Facts about Örebro

POPULATION

146,631 people live here (74,171 women and 72,460 men). The municipality has inhabitants from more than 165 different countries.

AREA

1,380 square kilometres (land area).

LOCATION

Right at the centre of Sweden in terms of population, with 200 km to Stockholm and 300 km to Gothenburg.

HISTORY

The city of Örebro celebrated its 750th anniversary in 2015. The construction of the city castle began as far back as the 13th century.

SCHOOLS

Örebro University, 15 upper secondary schools out of which five are public, more than 40 public compulsory schools and 14 private schools.

LOGISTIC CENTRE

Airport, train station, European highways and goods trains to the harbour in Gothenburg.

HERE YOU WILL FIND

The fourth largest lake in Sweden, Hjälmarén, deep forests and open landscape, mountains and plains and roughly 20 nature and culture reserves close to the city.

TWIN CITIES

Drammen in Norway, Kolding in Denmark, Lappeenranta/Villmanstrand in Finland, Stykkishólmur in Iceland, Lodz in Poland, Yantai in China, Terrassa in Spain and Pau in France.



O, Helga Natt (O Holy Night) is the largest Christmas concert in Sweden and have been a tradition since 2001. The photo is from the concert in 2016. Photography: The Municipality of Örebro.

FIND OUT MORE!

At orebro.se you can find municipal annual reports, annual statements by the committees, themed reports concerning personnel and sustainable development etc.

The Municipality of Örebro

+46 (0)19-21 10 00
orebro.se



PHOTOGRAPHY: THE MUNICIPALITY OF ÖREBRO, UNLESS OTHERWISE STATED.
PRODUKTION: ADVANT PRODUKTIONSBYRÅ. PRINTING: ÅTTA.45.

